

Article Info

Received: 25 Jan 2017 | Revised Submission: 20 Feb 2017 | Accepted: 28 Feb 2017 | Available Online: 15 Jun 2017

Optimum Yield Parameters Of Mwcnt/Mno₂ Nanocomposite

Md Zakir Hussain^{*}, Sabah Khan^{**}, Abhishek Gaur^{***} and Mohd Shuaib^{****}

ABSTRACT

The objective of this study is to illustrate the optimum parameters adopted to evaluate maximum yield of MWCNT/MnO₂ nanocomposite. In this paper, the effect of stirring time, Concentration of H₂SO₄ (aq) solution, solution temperature and drying time on yield of MWCNT/MnO₂ nanocomposite was investigated. The orthogonal array, signal-to-noise ratio, and percentage contribution of all parameters are employed to study the yield of MWCNT/MnO₂ nanocomposite. After conducting the experiments the yield was measured and Signal to noise ratio was calculated. With the help of graphs, optimum parameter values were obtained at parameter level A₂B₂C₂D₁.

The percentage contributions of parameters and regression analysis confirmed the concentration of H₂SO₄ has significant effect on yield of MWCNT/MnO₂ powder.

Keywords: Multiwalled Carbon Nanotubes; Yield; Solution Method; Taguchi Method.

1.0 Introduction

Taguchi method optimizes the variation occurs in a process with the help of design of experiments. The objective of Taguchi method is to produce high quality product at low cost and the product or process is most robust with respect to noise factors. Taguchi's approach to parameter design provides the design engineer with an efficient method for determining near optimum design parameters for performance and cost [1, 2]. The Taguchi method use orthogonal arrays from design of experiments theory to study many variables with a small number of experiments.

Using orthogonal arrays significantly reduces the number of experimental configurations to be studied. Gh. Tahmasebi et al.[3] presented optimization of Nano calcium carbonate production parameters to achieve the optimum production rate by using Taguchi method. It was found that the optimum level of process parameters were solution flow rate of 9 lit/min, gas flow rate of 20 lit/min, and solution concentration of 70 gr/lit and the production rate was enhanced by 168% in comparison to the mean value of the experimental results. I. Lozić et al. used

Taguchi method of experimental design to evaluation the spray drier process parameters influence on particle size diameter of alumina powder [4]. The analysis of the results showed that in order to achieve the smallest particle size the best combination of parameters for is lower concentration and pump performance as well as higher value of inlet temperature and spray flow rate.

Sheng-Meng Wang et al. [5] applied Taguchi's quality engineering to the in-situ supercritical fluid extraction and chemical derivatization of amphetamines from water to afford the optimal experimental conditions and hence achieved the highest recoveries of the analytes and the best robustness of the quantitation out of the least number of experimental runs. Achyut K. Panda used Taguchi method to identify the factors and their interactions that may affect the thermo-catalytic degradation of waste polypropylene to liquid fuel in a batch reactor [6]. The yield of liquid fuel in this process was greatly influenced by factors such as temperature, catalyst concentration and acidity of catalyst. From regression model, It was found that yield of liquid fuel in this process were highly

^{*}Department of Mechanical Engineering, Jamia Millia Islamia, New Delhi-25, India

^{**}Department of Mechanical Engineering, Jamia Millia Islamia, New Delhi-25, India

^{***}Department of Mechanical Engineering, Ambedkar Institute of Technology, Sakharpur, New Delhi, India

^{****}Corresponding Author: Department of Mechanical Engineering, Delhi Technological University, Delhi, India
(E-mail: shuaib89141@gmail.com)

dependent on temperature followed by acidity of catalyst and catalyst concentration.

S Kamaruddin et al. attempted to improve the quality characteristic of an injection molding product by optimizing the injection molding parameters using the Taguchi method [7].

The analysis of the results shows that the optimal combination for low shrinkage are low melting temperature, high injection pressure, low holding pressure, long holding time and long cooling time.

Arshad Noor Siddiquee et al. focused on optimizing deep drilling parameters based on Taguchi method for minimizing surface roughness and experiments were conducted on CNC lathe machine using solid carbide cutting tool on material AISI 321 austenitic stainless steel [8]. Four cutting parameters such as cutting fluid, speed, feed and hole depth, each at three levels except the cutting fluid at two levels were considered.

The cutting parameters such as speed, feed, and cutting fluid mainly influenced the surface roughness. Zahid A. Khan et al. investigated the effect of the wire electrical discharge machining process parameters on the surface roughness average and the kerf width of the stainless steel (SS 304) [9].

The pulse ON time is found to be the most influential factor for both the surface roughness and the kerf width.

The analysis of variance showed that the pulse ON time was the most significant controlled factor for affecting the multiple responses in the electrical discharge machining.

P. Jayaraman et al. presented a novel approach for the optimization of machining parameters on turning of AA 6063 T6 aluminium alloy with multiple responses based on orthogonal array with grey relational analysis [10].

They found that the feed rate, depth of cut were prominent factors which affect the turning of aluminium alloy.

Md. Israr Equbal et al. studied hot closed die forging of spring saddle and DEFORM TM 3D FEM based simulation software was used to examine the effect of design and process parameters on forging load and billet temperature loss [11].

Grey relational analysis, along with Taguchi method were employed to optimize the forging load and billet temperature loss simultaneously.

In the present research, optimized yield parameters of MWCNT/MnO₂ nanocomposite has been investigated without consideration of interaction effect based on the Taguchi's method which is a powerful tool used in design of experiments.

2.0 Process Optimization by Using Taguchi Method

2.1 Selection of yield parameters with their levels

Total nine experiments were conducted between 2 hr.-4hr. stirring time, 1.9M-2.1 M concentration of H₂SO₄(aq), 75 °C- 95 °C solution temperature, and 12 hr.-48 hr. drying time.

The yield parameter and their levels is shown in table 1. Taguchi's L9 orthogonal array was used to design the experiments with four factors such as stirring time, Concentration of H₂SO₄ (aq) solution, solution temperature and drying time at three levels. Taguchi's L9 Orthogonal Array is shown in table2.

Table1: Yield Parameters and their Levels

Parameter	Level-1	Level-2	Level-3
Stirring time (A)	2	3	4
Concentration of H ₂ SO ₄ (aq) (B)	1.9	2.0	2.10
Solution temperature (C)	75	85	95
Drying Time (D)	12	24	48

Table 2: L9 Orthogonal Array

Parameter/Level			
1	1	1	1
1	2	2	2
1	3	3	3
2	1	2	3
2	2	3	1
2	3	1	2
3	1	3	2
3	2	1	3
3	3	2	1

2.1.1 Materials

Multiwall Carbon nanotubes (purity > 95%) used as filler material and purchased from Redex Nano Laboratory, Uttar Pradesh, India.

Fig 1: MWCNT**Fig 2: KmnO₄**

2.1.2 Synthesis of powder of MWCNT/MnO₂ nanocomposite

A novel technique [12, 13] has been used to synthesize MWCNT/MnO₂ nanocomposite. In short, the experimental synthesis process of the nanocomposite is described below. A 500-ml beaker is charged with 0.1 gram multiwall carbon nanotube immersed in 250 ml at 1.9 M- 2.1M concentration level of boiling sulphuric acid (H₂SO₄) aqueous solution at stirring time 2 hr.- 4 hr. After dispersion, 4 gram KMnO₄ powder were added at different temperature parameter level i.e. 75°C-95°C along with stirring. The yield was observed and the solution color changed from purple to brown. The system was then cooled down to room temperature. The obtained yield was washed with de-ionized water and acetone to remove the remaining ions, and then dried at 65 °C in a laboratory oven for 12hr.-48 hr. The experimental setup is shown in figure 3.

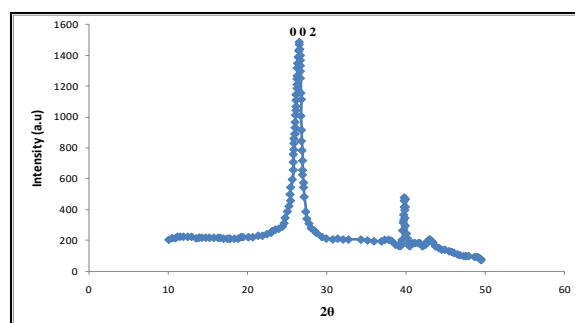
Fig 3: Experimental Setup

3.0 Chemical Characterization of MWCNT/ MnO₂ Nanocomposite Powder

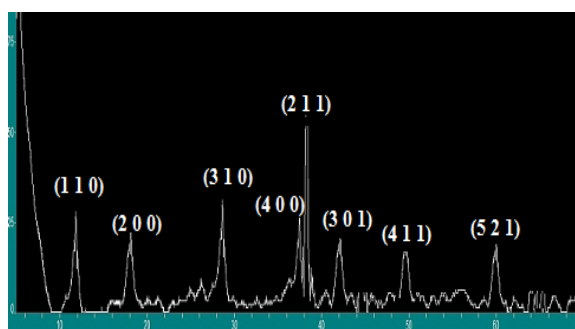
3.1 XRD pattern of MWCNT/ MnO₂ nanocomposite

X-ray diffraction is a non-destructive technique which gives the information about the crystallographic structure. The crystallographic structure of the nanocomposite was investigated using MiniFlex, with Cu K α radiation operated at 30kV and 15mA, Start-10° Stop-70° and Step increment 0.02°.

Figure 4(a) shows the XRD pattern of MWCNT. The XRD pattern of the MWCNT shows diffraction peaks at 26.6° indexed at (002) reflection of graphite [12-14].

Fig 4(a): XRD Pattern of MWCNT

The XRD data of MWCNT/MnO₂ nanocomposite is shown in figure: 4(b). In addition to (002) reflection, the other diffraction peak can be indexed to the tetragonal α -MnO₂ single-crystal structure, space group: I4/m (87) with lattice constants of $a = 0.982$ nm and $c = 0.2863$ nm and it also confirmed the formation of MWCNT/MnO₂ nanocomposite [12, 13].

Fig 4: XRD Pattern of 5 wt% MWCNT/MnO₂ Nanocomposite

4.0 Experimental Results Analysis and Discussion

4.1 Signal to noise ratio

The signal to noise ratio (S/N ratio) was used to measure the sensitivity of the quality characteristic being investigated in a controlled manner. The S/N ratio can be defined as S/N ratio [14].

$$\eta = -10 \log(MSD) \dots (1)$$

Where, *MSD*: mean-square deviation for the response.

To obtain optimum yield, the-higher-the-better response has been used. Table 3 shows the experimental response yield data and the corresponding S/N ratio.

Table3: Experimental Yield and S/N Ratio Results for L9 Orthogonal Array

Experiment No.	Parameter/Level				Yield (gm)	S/N ratio
	Stiring time (A)	Concentration (B)	Solution temperature (C)	Drying Time (D)		
1	1(2)	1(1.9)	1(75)	1(12)	1.80	5.249022
2	1(2)	2(2.0)	2(85)	2(24)	1.94	5.756035
3	1(2)	3(2.1)	3(95)	3(48)	1.88	5.483157
4	2(3)	1(1.9)	2(85)	3(48)	1.85	5.343435
5	2(3)	2(2.0)	3(95)	1(12)	1.96	5.845121
6	2(3)	3(2.10)	1(75)	2(24)	1.89	5.529236
7	3(4)	1(1.9)	3(95)	2(24)	1.81	5.153571
8	3(4)	2(2.0)	1(75)	3(48)	1.89	5.529236
9	3(4)	3(2.10)	2(85)	1(12)	1.87	5.436832

Figure 5 shows the S/N response graph for total yield.

The initial optimum combination of parameter level is A₂B₂C₂D₁ as shown in table 4.

Fig.6 to Fig.9 shows the variation of yield with different parameters at different levels.

Fig 5: s/n Response Graph

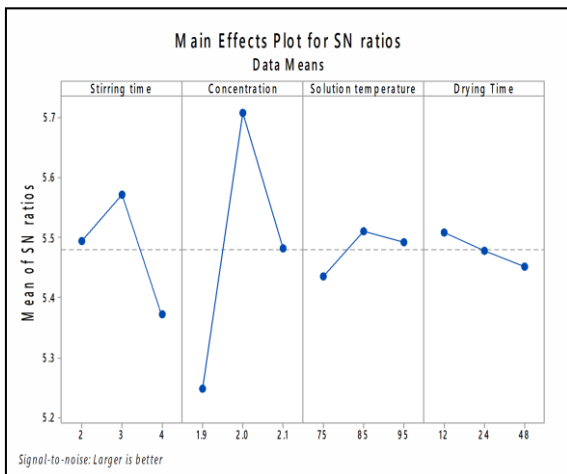


Fig 6: Fitted Line Plot Yield with Stiring Time

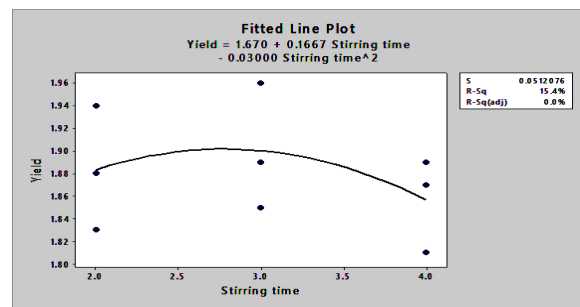


Fig 7: Fitted Line Plot Yield with Concentration

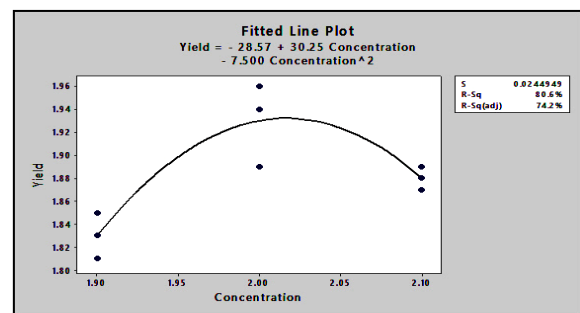


Fig 8: Fitted Line Plot Yield with Solution Temperature

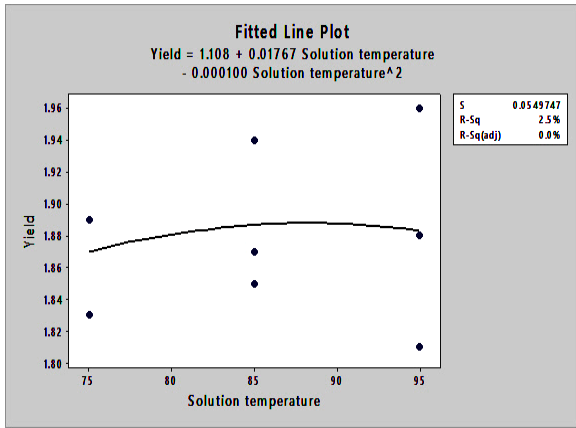


Fig 9: Fitted Line Plot Yield with Drying Time

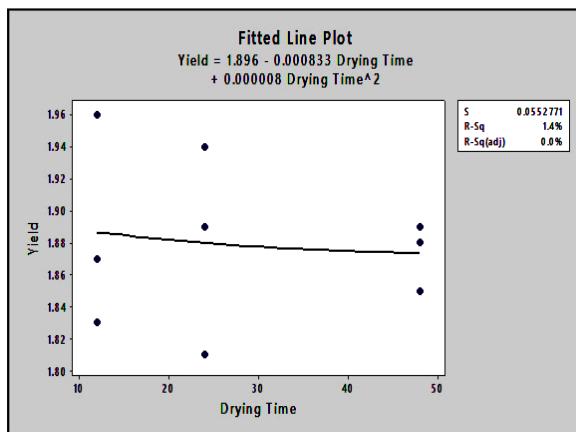


Table 4: Initial Optimum Level of Parameters

Sl. No	Parameter	Level
1	Stirring time	3 hr.
2	Concentration of H2SO4(aq)	2.0M
3	Solution temperature	850C
4	Drying Time	24 hr.

4.2 Analysis of Variance (ANOVA)

The analysis of variance is used to find the relative importance of parameters on yield of MWCNT/ MnO₂ nanocomposite. The contributions of parameter concentration of H₂SO₄ (aq) was 80.9146%. Similarly, the contribution of other parameters is shown in table 5. The concentration of H₂SO₄ has significantly effect on yield and the yield was maximum at 2.0 M.

Table 5: Percentage Contributions of Parameters

Source	DF	Seq SS	% contribution
Stirring time	2	0.060704	1.53765
Concentration	2	0.319438	80.9146
Solution temperature	2	0.009524	2.4125
Drying Time	2	0.005117	1.2962
Residual Error	0	-	-
	8	0.394784	-

4.3. Regression Analysis

The regression analysis gives the relationship between yields with different parameters. The relationship is given below.

Yield=1.373-0.0133 Stirring time+ 0.250 Concentration+ 0.00067 Solution temperature - 0.00036 Drying Time The Regression Analysis confirmed the effect of concentration of H₂SO₄ yield was significant in comparison to another factors consideration.

5.0 Conclusions

The yield of MWCNT/MnO₂ was measured under different experimental conditions. The S/N response graph shows initial optimum combination of parameter level A₂B₂C₂D₁. The percentage contributions of parameters confirmed the parameter concentration of H₂SO₄ has significant effect on response and optimum concentration level of H₂SO₄ is 2M solution. Regression analysis also confirmed process parameter concentration of H₂SO₄ has significant effect on response.

Reference

[1] R Kackar. Off-Line Quality Control, Parameter Design, and the Taguchi Method, Journal of Quality Technology, 17(4), 176-188.

[2] DM Bryne, S Taguchi. The Taguchi Approach to Parameter Design, ASQC Quality Congress Transactions, Anaheim, CA, 168.

[3] Gh. Tahmasebi Pour and S. M. Mirzaee Moghadam .Optimization of Nano Calcium Carbonate Production Process Using Taguchi Method. International Journal of

- Materials, Mechanics and Manufacturing, 2(1), 2014
- [4] I Lozić, T Penović, S Kurajica. Appliance of Taguchi Method of Experiment Design on Alumina Powder Preparation Process Using Spray-Drier. International conference on materials, tribology, recycling Vela Luka, 2011.
- [5] SM Wang, YS Giang, YC Ling. Taguchi's method in optimizing the experimental conditions of simultaneous supercritical fluid extraction and chemical derivatization for the gas chromatographic-mass spectrometric determination of amphetamine and methamphetamine in aqueous matrix. forensic science journal, 1, 2002,47-53
- [6] AK Pandaa, RK Singh. Optimization of Process Parameters by Taguchi Method: Catalytic degradation of polypropylene to liquid fuel. International journal of multidisciplinary and current research, 2013.
- [7] S Kamaruddin, ZA Khan, SH Foong. Application of Taguchi Method in the Optimization of Injection Moulding Parameters for Manufacturing Products from Plastic Blend. IACSIT International Journal of Engineering and Technology, 2(6), 2010.
- [8] AN Siddiquee, ZA Khana, P Goel, M Kumar, GAgarwal, NZKhan. Optimization of Deep Drilling Process Parameters of AISI 321 Steel using Taguchi Method. 3rd International Conference on Materials Processing and Characterisation (ICMPC 2014). Procedia Materials Science 6, 2014, 1217 – 1225.
- [9] ZA Khan, AN Siddiquee, NZ Khana, U Khan, GA Quadir. Multi response optimization of Wire electrical discharge machining process parameters using Taguchi based Grey Relational Analysis. 3rd International Conference on Materials Processing and Characterisation (ICMPC 2014), Procedia Materials Science 6, 2014, 1683 – 1695
- [10] P Jayaraman, LMahesh Kumar. Multi-response Optimization of Machining Parameters of Turning AA6063 T6 Aluminium Alloy using Grey Relational Analysis in Taguchi Method. Procedia Engineering 97, 2014, 197 – 204
- [11] MI Equbal, R Kumar, MShamim, RK Ohdar. A grey-based Taguchi method to optimize hot forging process, 3rd International Conference on Materials Processing and Characterisation (ICMPC 2014), Procedia Materials Science 6, 2014, 1495 – 1504
- [12] Y Chen, CG Liu, CLiu, GQ Lu, HM Cheng. Growth of single-crystal α -MnO₂ nanorods on multi-walled carbon nanotubes. Materials Research Bulletin, 42(11), 2007, 1935– 1941.
- [13] MZ Hussain, S Khan, R Nagarajan, U Khan, V Vats. Fabrication and Microhardness Analysis of MWCNT/MnO₂ Nanocomposite. Journal of Materials, Article ID 6070468, 2016
- [14] RK Roy. A Primer on the Taguchi method. Competitive Manufacturing Series. Van Nostrand Reinhold, New York. 1990.